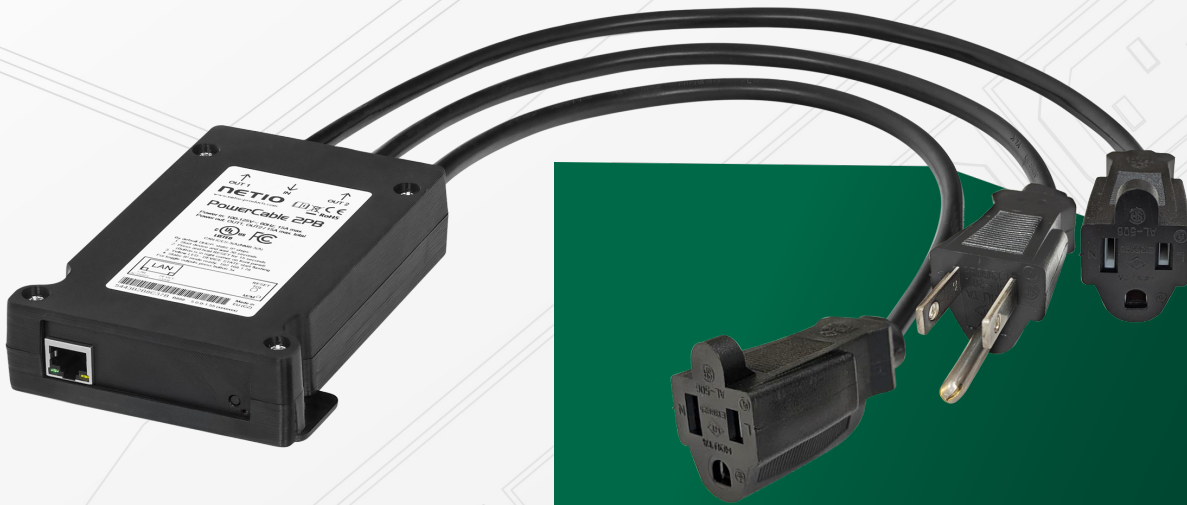


# PowerCable 2PB

# NETIO

**PowerCable 2PB is a FLAT PDU (Power Distribution Unit) with 2 power outputs (2x NEMA 5-15R) controlled over a LAN or WiFi. Each output can be switched on/off/toggle individually over the web interface, NETIO Cloud service or the mobile app. Open API enables integration with 3rd party systems. using a wide range of protocols (http JSON, Modbus/TCP, SNMP, MQTT-flex, Telnet, ...).**

- LAN (Ethernet) & WiFi
  - **Input:** NEMA 5-15P
  - **Output:** 2x NEMA 5-15R sockets
- 
- **HTTPs supported**, Open API (10 protocols, M2M API)
  - **Mobile app:** NETIO Mobile 2
  - **Online Service:** NETIO Cloud



Each output can be switched On/Off remotely. Outputs can be switched ON in a sequence after a power-up or restoration by configuring a custom power-up delay interval for each output individually.

NETIO PowerCable 2PB with its small flat body is a perfect pick for small spaces or to use behind the screen.

The **NETIO Mobile 2** app controls each output individually over LAN (local network) or NETIO Cloud.

**NETIO Cloud** is a SSL-secured service for controlling multiple devices from anywhere (Web or Cloud API).


**Open API** (such as HTTPs, XML/JSON over HTTP, SNMP, Modbus/TCP, MQTT-flex, Telnet and others...) enables integration with third party systems (controlling the outputs over the network).

**AV drivers** make it easy to connect NETIO sockets to a professional Audio/Video control systems such as Utelogy, Crestron, Control4, RTI, Savant and more.


**The Scheduler function** (calendar) - time based switching.


 **UL Certification**

 **TAA Compliant**

 **Remote switching on/off or power-cycling of the electrical outputs**

 **Central web interface for controlling multiple devices**

 **Controlled power-up: Outputs are switched on in a defined order with a delay**

 **Drivers for AV systems and installations (Utelogy, Crestron, Control4, RTI, ELAN, SKAARHOJ...)**

 **Energy savings - SOHO applications**

## FEATURES

- 2x NEMA 5-15R power output
  - Each output can be switched on/off individually
  - Methods for controlling each output:
    - WEB browser
    - Mobile app: NETIO Mobile 2 (iOS and Android)
    - NETIO Cloud
    - Scheduler
    - Watchdog (Ping)
    - Rules & Conditions
    - Open API (10 protocols)
- 
- **NETIO Mobile 2:** Mobile app
  - **NETIO Cloud:** Service for controlling multiple devices
- 
- **ZVS (Zero Voltage Switching):** The relay is switched when the voltage crosses zero. It reduces relay wear and allows switching devices with a high Inrush Current.
  - **Ping Watchdog:** "Heartbeat" detection function.
  - FW upgrade over the Web interface
  - **The Scheduler function:** Time based switching
- 
- **Open API (protocols)**
    - JSON over HTTP(s)
    - Modbus/TCP
    - MQTT-flex
    - Telnet
    - SNMP (SNMP v1/v3)
    - XML over http(s)
    - URL API – http get
    - HTTP Push JSON / XML
  - Supported protocols: HTTP(s), DNS, NTP, uPNP, DHCP, ICMP, TCP/IP

## SUPPORT FOR USERS AND DEVELOPERS

- NETIO Wiki – library for developers
- ANxx (Application Notes) with examples
- NETIO Drivers – for AV control systems

NETIO PowerCable	2KB
NETIO PowerCable	2KZ
NETIO PowerCable	2PB
NETIO PowerCable	2PZ

FLAT PDU with LAN & WiFi conection with 2 outputs NEMA 5-15R, switching and metering. 3x 11.81 in cables included.
FLAT PDU with LAN & WiFi conection, switching and metering. Terminal block, no cables included.
FLAT PDU with LAN & WiFi conection with 2 outputs NEMA 5-15R, switching. 3x 11.81 in cables included.
FLAT PDU with LAN & WiFi conection, switching. Terminal block, no cables included.

## SPECIFICATIONS

### POWER

- Power input: NEMA 5-15P (100-125V AC)
- Power output: 2x NEMA 5-15R, max 15A each (UL rating 12A)
- Each output: On/Off (relay SPST-NO)
- **ZVS (Zero Voltage Switching):** Yes
- Internal consumption: 1-3 W
- **PowerUp State:** Default output state (On/Off/Last state)
- **PowerUp Delay:** Delay before switching output on

### INTERFACES

- LAN 10/100 Mbps (RJ-45)
- WiFi 2,4 GHz (internal antenna)
- Load Defaults button (on the pannel)

### ELECTRICAL MEASUREMENTS (no)

- Does not support electrical measurement

### PACKAGE CONTENTS

- NETIO PowerCable 2PB
- QIG (printed Quick Installation Guide)

### DIMENSIONS / WEIGHT

- PowerCable 2PB:
  - Terminal Block: 4.0158 x 1.2598 x 5.8661 in / 0.434 lb (102 x 32 x 149 mm / 197 g)
  - Cables: 3x 11.811 in (30 cm)
- Package: 10.0394 x 2.874 x 8.0315 in / 1.3118 lb (255 x 73 x 204 mm / 595 g)

### OPERATING CONDITIONS

- Temperature
  - -4 °F to +131 °F (-20 °C to +55 °C)
  - For indoor use only (IP30)

**NORMS:** UL 62368-1, CAN/CSA C22.2 No. 62368-1, FCC 47 CFR - Part 15, ICES-003